

# Installation Guide

8-Port Gigabit Easy Smart Reverse PoE Switch

The images in this guide are for demonstration only and may differ from your actual product.



For more information, go to the Documents Center by scanning the QR code or visiting <https://support.omadanetworks.com/document/>.

## Package Contents



Switch



Installation Guide



DC Power Cable

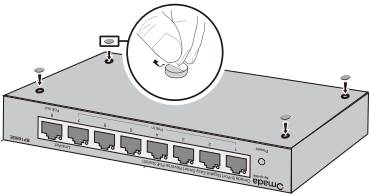


Rubber Feet

## Installation

### Option 1: Desktop Installation

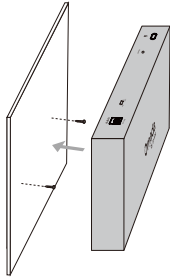
Attach the supplied rubber feet to the bottom of the switch to prevent it from slipping when placed on a desktop.



**Note:**  
Avoid placing the switch on top of another and use the rubber feet to ensure enough clearance for air circulation.

### Option 2: Wall-Mounting Installation

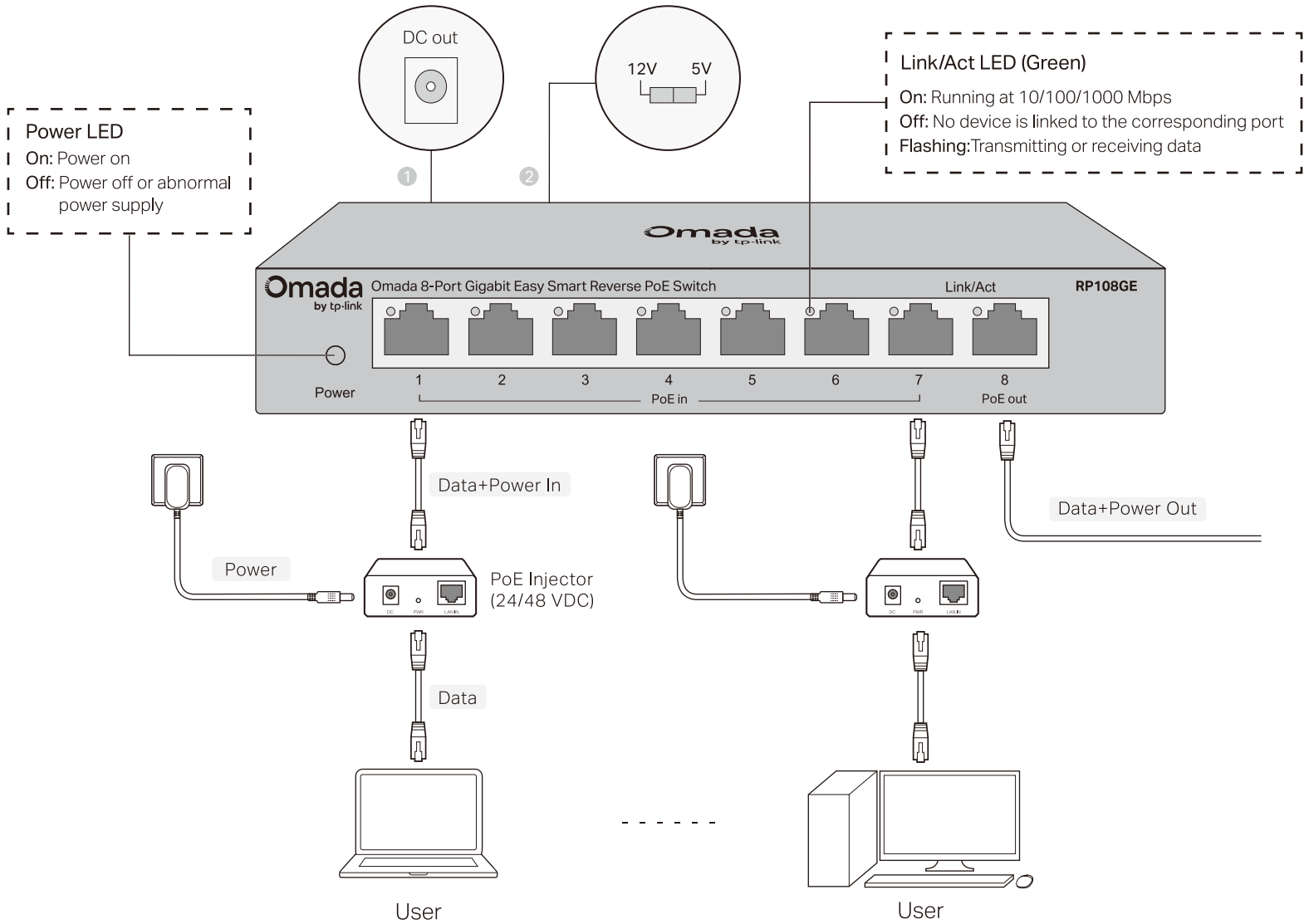
Drill two holes in the wall aligned with the switch's mounting holes, then secure it using two appropriate screws (not provided).



**Note:**  
Ensure enough clearance between the switch and the wall for air circulation. For detailed information, refer to the Wall Mounting Guide at <https://support.omadanetworks.com/document/901/>.

## Connection

**Note:**  
1. DC out is a power output port. Do not connect it to any power source.  
2. Set the required voltage of the powered device before connection.



## Configuration

The switch is plug and play. To configure the switch, you can use the Web-based GUI or the configuration utility. The utility is only supported on Windows now.

### Option 1: Using the Web-based GUI

- Find out the IP address of the switch.
  - By default, the switch receives an IP address from a DHCP server (or a router that functions as a DHCP server) in your network. You can find out this IP address on the DHCP server.
  - If the switch cannot receive an IP address from a DHCP server, it uses the static IP address of **192.168.0.1**, with a subnet mask of **255.255.255.0**.
- Configure IP address on your PC to make sure the switch and PC are in the same subnet.

- If the switch uses an IP address assigned by a DHCP server, set your PC to obtain an IP address automatically from the DHCP server.
- If the switch uses **192.168.0.1** as the IP address, configure your PC's IP address as **192.168.0.x** ("x" ranges from 2 to 254), and subnet mask as **255.255.255.0**.

- Launch a web browser on your PC, enter the IP address of the switch in the address bar and press **Enter**. Log in with **admin** as both user name and password.


Now you can configure the switch using the Web-based GUI. For further information, refer to the **User Guide** at <https://support.omadanetworks.com/document/>.

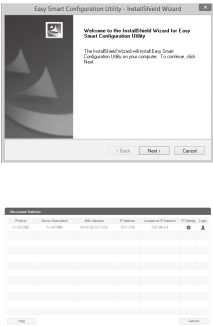
**Note:** If the switch gets a new IP address from the DHCP server, your connection to the switch will be lost. Enter the new IP address in your browser to access the switch again.


Option 2: Using the Configuration Utility

1. Go to <https://support.omadanetworks.com/> and search the model number of your switch. Download the **Easy Smart Configuration Utility** from the product **Support** web page on your PC.

2. Unzip the downloaded file, run the installation wizard and follow the prompts to install the **Easy Smart Configuration Utility**.

3. Double click the icon  on the desktop, and the utility Home page will display a list of Omada switches on the local network.



4. Click  to find out IP parameters of the switch.
- If the switch uses an IP address assigned by a DHCP server, set your PC to obtain an IP address automatically from the DHCP server.
  - If the switch uses **192.168.0.1** as the IP address, configure your PC's IP address as **192.168.0.x** ("x" ranges from 2 to 254), and subnet mask as **255.255.255.0**.



5. Double click the switch that you want to configure. Log in with **admin** as both user name and password.

Now you can configure the switch using the configuration utility. For further information, refer to the **Easy Smart Configuration Utility User Guide** at <https://support.omadanetworks.com/document/>.

Specifications

Standard	IEEE802.3ab, IEEE802.3i, IEEE802.1p IEEE802.1q, IEEE802.3x, IEEE802.3u
Protocol	CSMA/CD
Data Transfer Rate	Ethernet: 10 Mbps (Half Duplex), 20 Mbps (Full Duplex)
	Fast Ethernet: 100 Mbps (Half Duplex), 200 Mbps (Full Duplex)
	Gigabit Ethernet: 2000 Mbps (Full Duplex)
Network Media (Cable)	10Base-T: UTP category 3, 4, 5 cable (maximum 100 m) EIA/TIA-568 100 Ω STP (maximum 100 m)
	100Base-TX: UTP category 5, 5e cable (maximum 100 m) EIA/TIA-568 100 Ω STP (maximum 100 m)
	1000Base-T: UTP category 5e cable (maximum 100 m) EIA/TIA-568 100 Ω STP (maximum 100 m)
	<b>7 Passive PoE-in RJ45 Ports:</b> 10/100/1000Mbps Auto-Negotiation Voltage: 24/48 V (mixture is not supported) Power pin of Ethernet cable: 4/5+ 7/8-
Interface	<b>1 Passive PoE-out RJ45 Port:</b> 10/100/1000Mbps Auto-Negotiation Voltage: depending on the input voltage of PoE-in ports Power pin of Ethernet cable: 4/5+ 7/8-
	<b>1 DC Output Port:</b> Voltage: 5/12 V
LED indicators	Power, Link/Act LED
Transfer Method	Store-and-Forward
MAC Address Learning	Automatically Learning, Automatically Aging
Frame Forward Rate	10Base-T: 14881 pps/Port
	100Base-TX: 148810 pps/Port
	1000Base-T: 1488095 pps/Port
Wall Mountable	Yes
Distance Between Mounting Holes	65 mm

More Resources

Main Site	<a href="https://www.omadanetworks.com/">https://www.omadanetworks.com/</a>
Video Center	<a href="https://support.omadanetworks.com/video/">https://support.omadanetworks.com/video/</a>
Documents	<a href="https://support.omadanetworks.com/document/">https://support.omadanetworks.com/document/</a>
Product Support	<a href="https://support.omadanetworks.com/product/">https://support.omadanetworks.com/product/</a>
Technical Support	<a href="https://support.omadanetworks.com/contact-support/">https://support.omadanetworks.com/contact-support/</a>

Safety Information

- Keep the device away from water, fire, humidity or hot environments.
- Do not attempt to disassemble, repair, or modify the device. If you need service, please contact us.
- DC out is a power output port. Do not connect it to any power source.
- Adapter shall be installed near the equipment and shall be easily accessible.
- This equipment can be powered only by equipments that comply with Power Source Class 2 (PS2) or Limited Power Source (LPS) defined in the standard of IEC 62368-1.

Please read and follow the above safety information when operating the device. We cannot guarantee that no accidents or damage will occur due to improper use of the device. Please use this product with care and operate at your own risk.

Frequently Asked Questions (FAQ)

Q1. Why is the Power LED not lit?

By default, the Power LED should be lit when the power system is working normally. If the Power LED is not lit, please try the following:

- A1:

Make sure the power source is ON, and PoE-in ports are connected to power sourcing devices.
- A2:

Make sure the voltage of the power supply meets the requirements of the input voltage of the switch (specific range refers to Disclaimer No.3).
- A3:

Make sure the electric current of DC out/port 8 is within the proper range (specific range refers to Disclaimer No. 4).

Q2. Why is the Link/Act LED not lit while a device is connected to the corresponding port?

Please try the following:

- A1:

Make sure that the cable connectors are firmly plugged into the switch and the device.
- A2:

Make sure the connected device is turned on and works normally.
- A3:

The cable must be less than 100 meters long (328 feet). The actual distance varies under different voltage and electric current. When higher electric current is in need, the transmission distance is shorter.

Disclaimers

1.

When the reverse switch functions, do not use the alternation switch to change output voltage of the DC output port, and do not plug in or plug out cables connected to port 1–8.
2.

It is recommended to use PoE injectors with overcurrent protection.
3.

The input voltage of PoE-in ports should be higher than 18 V and lower than 51 V.
4.

When the input voltage of port 1–7 is 24 V (±5%), the total output power should be ≤10 W, the maximum output current of DC out is 1.2 A/5 V and 0.8 A/12 V. When the input voltage of port 1–7 is 48 V (±5%), the total output power should be ≤ 26 W, the maximum output current of DC out is 0.9 A/5 V and 1.0 A/12 V.
5.

The device connected to port 8 should support passive PoE, otherwise, the impedance between pair 4&5 and pair 7&8 should be higher than 1 MΩ.

Warranty

For details on the warranty period, policy, and procedures, visit <https://support.omadanetworks.com/warranty-services/>.

Support

For technical support, user guides and other information, please visit <https://support.omadanetworks.com/>, or simply scan the QR code.



EU declaration of conformity

TP-Link hereby declares that the device is in compliance with the essential requirements and other relevant provisions of directives 2014/30/EU, 2014/35/EU, 2011/65/EU and (EU)2015/863. The original EU declaration of conformity may be found at <https://www.tp-link.com/en/support/ce/>

UK declaration of conformity

TP-Link hereby declares that the device is in compliance with the essential requirements and other relevant provisions of the Electromagnetic Compatibility Regulations 2016 and Electrical Equipment (Safety) Regulations 2016. The original UK declaration of conformity may be found at <https://www.tp-link.com/support/ukca/>



## FCC Compliance Information Statement



Product Name: 8-Port Gigabit Easy Smart Reverse PoE Switch

Model Number: RP108GE

Responsible party:

TP-Link Systems Inc.

10 Mauchly, Irvine, CA 92618

Website: <https://www.tp-link.com/us/>

Tel: +1 626 333 0234

Fax: +1 909 527 6804

E-mail: [sales.usa@tp-link.com](mailto:sales.usa@tp-link.com)

This equipment has been tested and found to comply with the limits for a Class A digital device, pursuant to part 15 of the FCC Rules. These limits are designed to provide reasonable protection against harmful interference when the equipment is operated in a commercial environment. This equipment generates, uses, and can radiate radio frequency energy and, if not installed and used in accordance with the instruction manual, may cause harmful interference to radio communications. Operation of this equipment in a residential area is likely to cause harmful interference in which case the user will be required to correct the interference at his own expense.

This device complies with part 15 of the FCC Rules. Operation is subject to the following two conditions:

- 1) This device may not cause harmful interference.
- 2) This device must accept any interference received, including interference that may cause undesired operation.

Any changes or modifications not expressly approved by the party responsible for compliance could void the user's authority to operate the equipment.

We, **TP-Link Systems Inc.**, has determined that the equipment shown as above has been shown to comply with the applicable technical standards, FCC part 15. There is no unauthorized change is made in the equipment and the equipment is properly maintained and operated.

Issue Date: 2025/03/11

## CE Mark Warning



This is a class A product. In a domestic environment, this product may cause radio interference, in which case the user may be required to take adequate measures.

TP-Link hereby declares that the device is in compliance with the essential requirements and other relevant provisions of directives 2014/30/EU, 2014/35/EU, 2011/65/EU and (EU)2015/863.

The original EU declaration of conformity may be found at <https://www.tp-link.com/en/ce>

## UKCA Mark Warning



TP-Link hereby declares that the device is in compliance with the essential requirements and other relevant provisions of the Electromagnetic Compatibility Regulations 2016 and Electrical Equipment (Safety) Regulations 2016.

The original UK declaration of conformity may be found at <https://www.tp-link.com/support/ukca/>

## Industry Canada Statement

CAN ICES (A) / NMB (A)



この装置は、クラス A 情報技術装置です。この装置を家庭環境で使用すると電波妨害を引き起こすことがあります。この場合には使用者が適切な対策を講ずるよう要求されることがあります。

VCCI-A

## Korea Warning Statements

당해 무선설비는 운용중 전파혼신 가능성이 있음 .

## BSMI Notice

安全諮詢及注意事項

- 請使用原裝電源供應器或只能按照本產品注明的電源類型使用本產品。
- 清潔本產品之前請先拔掉電源線。請勿使用液體、噴霧清潔劑或濕布進行清潔。
- 注意防潮，請勿將水或其他液體潑灑到本產品上。
- 插槽與開口供通風使用，以確保本產品的操作可靠並防止過熱，請勿堵塞或覆蓋開口。

- 請勿將本產品置放於靠近熱源的地方。除非有正常的通風，否則不可放在密閉位置中。
- 不要私自拆開機殼或自行維修，如產品有故障請與原廠或代理商聯繫。

為避免電磁干擾，本產品不應安裝或使用於住宅環境。

限用物質含有情況標示聲明書

單元	限用物質及其化學符號					
	鉛 Pb	鎘 Cd	汞 Hg	六價鉻 Cr <sup>+6</sup>	多溴聯苯 PBB	多溴二苯醚 PBDE
PCB	○	○	○	○	○	○
外殼	○	○	○	○	○	○
五金組件	—	○	○	○	○	○
其他及其配件	—	○	○	○	○	○
備考1. "超出0.1 wt %" 及 "超出0.01 wt %" 系指限用物質之百分比含量超出百分比含量基準值。 備考2. "○"系指該項限用物質之百分比含量未超出百分比含量基準值。 備考3. "—" 系指該項限用物質為排除項目。						



Продукт сертифіковано згідно с правилами системи УкрСЕПРО на відповідність вимогам нормативних документів та вимогам, що передбачені чинними законодавчими актами України.



## Safety Information

- Do not attempt to disassemble, repair, or modify the device. If you need service, please contact us.
- 請勿嘗試拆裝、修理或改裝此設備。如有其他需求，請聯繫我們。
- Place the device with its bottom surface downward.
- 將設備底部朝下放置。
- Keep the device away from water, fire, humidity or hot environments.
- 將設備遠離水、火、潮濕或高溫的環境。
- Plug the product into the wall outlets with earthing connection through the power supply cord.
- 透過電源線將產品插入具有接地的牆壁插座上。
- The plug on the power supply cord is used as the disconnect device, the socket-outlet shall be easily accessible.
- 電源線上的插頭端用途為將設備斷電，插座應在易插拔的位置。
- The socket-outlet shall be installed near the equipment and shall be easily accessible.

- 插座應安裝在設備附近且易插拔的位置。
- This equipment can be powered only by equipments that comply with Power Source Class 2 (PS2) or Limited Power Source (LPS) defined in the standard of IEC 62368-1. (Only for switch powered by USB or standard PoE)
- 這台設備僅能由符合 IEC 62368-1 標準中定義的電源等級 2 (PS2) 或有限電源 (LPS) 的設備供電。
- The operating temperature for the device shall be within 0°C to 40°C (32°F to 104°F).
- 設備運作溫度：0°C to 40°C (32°F to 104°F)
- In **Denmark**: "Apparatets stikprop skal tilsluttes en stikkontakt med jord som giver forbindelse til stikproppens jord.";
- In **Finland**: "Laite on liitettävä suojakoskettimilla varustettuun pistorasiaan" ;
- In **Norway**: "Apparatet må tilkoples jordet stikkontakt" ;
- In **Sweden**: "Apparaten skall anslutas till jordat uttag" .

Please read and follow the above safety information when operating the device. We cannot guarantee that no accidents or damage will occur due to improper use of the device. Please use this product with care and operate at your own risk.



## Explanation of the symbols on the product label

### 產品標籤上符號的解釋




Note: The product label can be found at the bottom of the product and its I.T.E. power supply. Symbols may vary from products.

注意：產品標籤可以在產品底部和其 I.T.E. 電源供應器上找到。產品標籤可在產品底部找到。符號可能因產品而異。

Symbol 符號	Explanation 說明
	Class II equipment 二級設備
	Class II equipment with functional earthing 具有接地功能的二級設備
	Alternating current 交流電
	Direct current DC 電壓



	Polarity of d.c. power connector 輸出端點的極性
	For indoor use only 僅供室內使用
	Dangerous voltage 危險電壓
	Caution, risk of electric shock 請注意，有觸電的危險
	Energy efficiency Marking 能源效率標誌
	Protective earth 保護接地
	Earth 接地
	Frame or chassis 框架或外殼
	Functional earthing 功能接地
	Caution, hot surface 請注意，表面過熱
	Caution 警告
	Operator's manual 操作手冊
	Stand-by 待機
	"ON"/"OFF" (push-push) “開啟” /” 關閉”（按壓式）
	Fuse 保險絲
	Fuse is used in neutral N 保險絲用於中性線 N

	<p><b>RECYCLING</b></p> <p>回收</p> <p>This product bears the selective sorting symbol for Waste electrical and electronic equipment (WEEE). This means that this product must be handled pursuant to European directive 2012/19/EU in order to be recycled or dismantled to minimize its impact on the environment.</p> <p>User has the choice to give his product to a competent recycling organization or to the retailer when he buys a new electrical or electronic equipment.</p> <p>這個產品帶有歐盟指令 2012/19/EU 中關於廢棄電氣電子設備（WEEE）的選擇性分類標誌。這意味著，該產品必須按照該指令處理，以便進行回收或拆解，從而最大限度地減少對環境的影響。</p> <p>用戶可以選擇將產品交給有資格的回收機構，或在購買新的電器或電子設備時將其交給零售商進行回收。</p>
	<p>Caution, avoid listening at high volume levels for long periods</p> <p>請小心，避免長時間以高音量收聽。</p>
	<p>Disconnection, all power plugs</p> <p>斷線，所有電源插頭</p>
<p><b>m</b></p>	<p>Switch of mini-gap construction</p> <p>迷你間隙結構開關</p>
<p><b>μ</b></p>	<p>Switch of micro-gap construction (for US version)</p> <p>Switch of micro-gap / micro-disconnection construction (for other versions except US)</p> <p>小間隙結構開關（US 版本）</p> <p>小間隙 / 小斷開結構的開關（非 US 版）</p>
<p><b>ε</b></p>	<p>Switch without contact gap (Semiconductor switching device)</p> <p>無接觸間隙的開關（半導體開關設備）</p>

## Wall Mounting Requirements

To mount the device on a wall, use 2 screws which complies with ANSI B1.1 4#/5#/6# standard and are more than 8.5 mm in length. When the screws are fixed on the wall, the distance between the screw head and the wall should be more than 1.5 mm.